



Scan QR Code
for More Details



Head Office :
Opp. Zydus Pharmez, Changodar-Bavla Highway, Nr. Matoda Patiya,
Po : Matoda, Ahmedabad - PIN : 382213 Gujarat, India.
Contact : +91 90996 16769 | +91 99099 19545 | +91 90999 81023
Email : info@accuprec.com | **Web :** www.accuprec.com

North America Office :
Pittsburgh, PA, USA
Email : info.usa@accuprec.com

Canada Office :
Sudbury, ON, Canada
Email : info.canada@accuprec.com

Stay Connected With Us On   

K K Printing & Advt. - 99253 22111



About us...

Accuprec Research lab Pvt. Ltd. is founded on 9th August 2012 with an objective to provide research and development solution in the segment of Pharma, Bio, Food and Medical device.

Accuprec has started In House R & D activities of Accuprec Research Lab (IHRD-ARL) from 1st August 2013.

Currently the company has established Phase-1(2016-2017) of state of the art research facility for contract research in 18,000 sq. ft area and In-house R&D center in 5,000 sq. ft facility opposite to Zydus Pharmez, Changodar Bawla highway, Post: Matoda, Ahmedabad. In Phase-2 (2017-2018), additional construction of appx. 80,000 sq. ft is on going for expanded contract research and In-house research facility.

Company comprises of fully equipped laboratory with high-tech advanced instruments and highly qualified technical personnel to carry our Research and Development activities in varied areas.

In-house R&D unit of Accuprec is engaged in the area of new product development, Formulation & Development, Nanotechnology & Biotechnology based product and medical device development, Analytical method development and like, thereby transforming discoveries ideas into the highest quality therapeutic products.

So far at Accuprec, we have developed 14 polyherbal formulations which are patented and eight of them are also commercialized.



Research to renew

OBEPREC™



WHY OBEPREC ?

- Possess serotonin modulating effect higher than fluoxetine
- Possess HMG co enzyme A activity which is possess as atorvastatin.
- Significantly reduce the LDL level and increases level of HDL
- Delay gastric empty time thereby reduce food absorption and lipid absorption.

Triple action

OBEPREC = Atorvastatin + Fluoxetine + Atropine

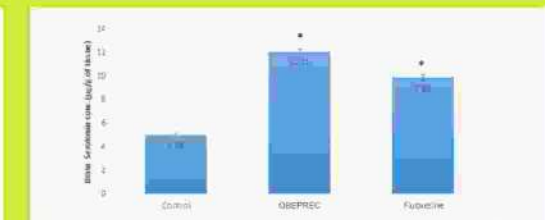
RECOMMENDED USE OR PURPOSE (HEALTH CLAIM)

It is formulated to improve quality of life by reducing fat and assisting in weight loss. It is an Ayurvedic preparation formulated with premium herbs intended to be used by individuals targeting weight loss by increasing BMR (Basal Metabolism Rate) and ultimately reducing BMI (Body Mass Index).

DOSAGE AND TREATMENT PERIOD

- Dose: 2 capsule(s) 2-3 time(s) a day
- Capsules to be taken after meal
- Duration of use: minimum of 3-6 months

SCIENTIFIC BACKGROUND



DIAPREC™

WHY DIAPREC ?

- Significantly reduce the BGL (Blood glucose level) within 7 day treatment which is comparable Glibenclamide
- Significantly reduce TG level which is helpful in insulin resistance Type-2 Diabetes



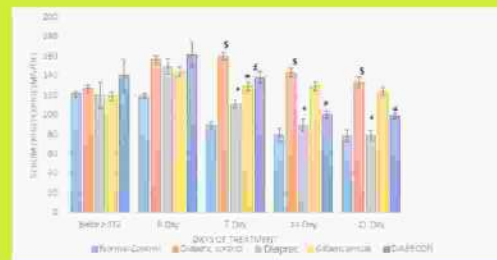
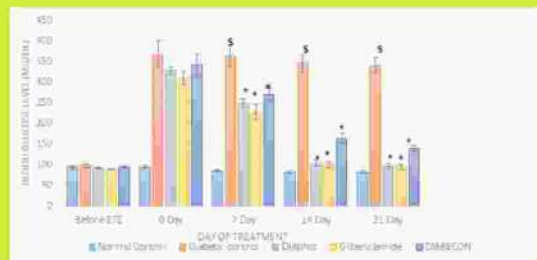
RECOMMENDED USE OR PURPOSE (HEALTH CLAIM):

- It is formulated according to the essence of Ayurveda.
- The present herbal supplement is intended to be used by person having risk of diabetes as it is believed to act by reducing blood sugar level and thereby improving the health of diabetics and preventing long term complications.

DOSAGE AND TREATMENT PERIOD:

- Dose: 2 capsule(s) 2-3 time(s) a day
- Capsules to be taken before meal
- Duration of use: minimum of 3-6 months

SCIENTIFIC BACKGROUND



ARTHROPREC™

WHY ARTHROPREC ?

- Significant reduction of arthritic index as well as rheumatoid factor which was at par with steroid drug prednisolone.



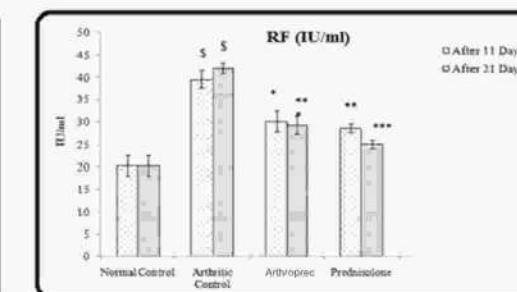
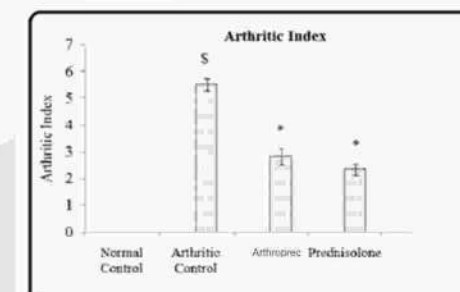
RECOMMENDED USE OR PURPOSE (HEALTH CLAIM):

- The herbs used in this formulation have shown enormous healing potential in case of rheumatoid arthritis conditions. It's natural anti-inflammatory action that helps repairs of joint tissues by stimulating the manufacture of cartilage. It protect cartilage from damage and accelerates healing.

DOSAGE AND TREATMENT PERIOD:

- Dose: 2 capsule(s) 2-3 time(s) a day
- Capsules to be taken after meal
- Duration of use: minimum of 3-6 months

SCIENTIFIC BACKGROUND



LIV-PREC™



WHY LIVPREC ?

- It significantly reduce SGPT, SGOT, ALP and total bilirubin level
- It significantly reduce direct bilirubin, cholesterol and triglyceride which is at par with standard drug silymarin

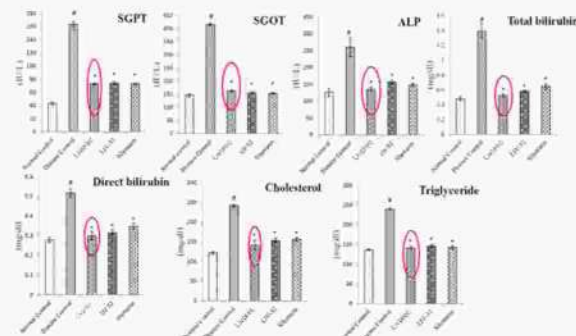
RECOMMENDED USE OR PURPOSE (HEALTH CLAIM)

This Ayurvedic preparation is specially design to protect Liver. The herbs used in this formulation have shown enormous healing potential. As liver is the chief organ responsible for metabolism even normal healthy individuals can also take LIVPREC to protect the liver from oxidative stress.

DOSAGE AND TREATMENT PERIOD

- Dose: 2 capsule(s) 2-3 time(s) a day
- Capsules to be taken after meal
- Duration of use: minimum of 3-6 months

SCIENTIFIC BACKGROUND



ORTHOPREC™



WHY ORTHOPREC ?

It significantly reduce serum calcium level and serum ACP level.

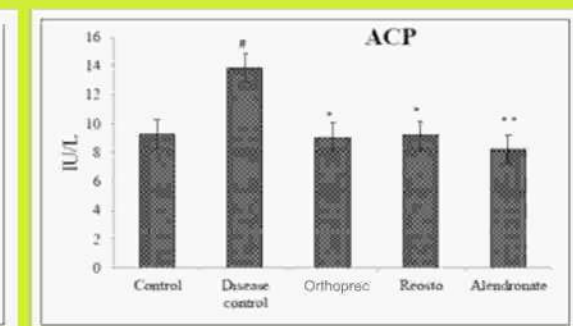
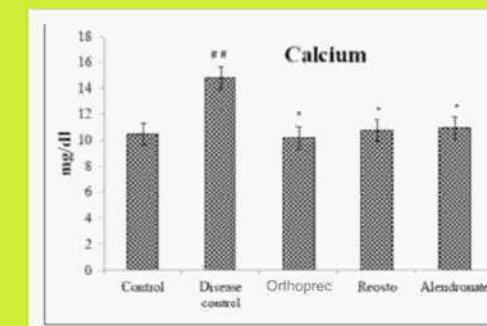
RECOMMENDED USE OR PURPOSE(HEALTH CLAIM)

The herbs used in this formulation have shown enormous healing potential in case of osteoarthritis conditions. It reduces oxidative stress level at the bone side and reduces leaching of calcium ions from the bones and also increases cementing of calcium ions inside the bones. By this way help in increasing bone density and bone mass and retard resorption of bones.

DOSAGE AND TREATMENT PERIOD

- Dose: 2 capsule(s) 2-3 time(s) a day
- Capsules to be taken after meal
- Duration of use: minimum of 3-6 months

SCIENTIFIC BACKGROUND



X-PREC³

RECOMMENDED USE OR PURPOSE (HEALTH CLAIM):

- This Ayurvedic preparation is specially design for treatment of the erectile dysfunction. The herbs used in this formulation have shown vasodilator action on sexual parts blood vessels. Even normal healthy individuals can also take XPREC.
- It is safe for use and providing amazing results

DOSAGE AND TREATMENT PERIOD:

- Dose: 2 capsule(s) at bad time
- Capsules to be taken after meal
- Duration of use: minimum of 3-6 months



WHY ACCULIPS ?

- Its provides supplement of Iron, Vitamin B12, Folic acid and Vitamin C.
- Nano technology based formulation
- Natural Ingredient base formulation

PRODUCT FACTS

- Active Ingredients:
 - Liposomal Nano Particles of
 - Iron
 - Folic Acid
 - Vitamin B12
 - Vitamin C

DIRECTION FOR USE

Gently Apply on Clean Lips two times a day or as require.

AWARD WINNING PRODUCT

ACCULIPS achieved prestigious GIS Trend Setter Award by Gujarat Innovation Society (GIS) for innovation in nutraceuticals.



Dr. Rina Gokani Receiving GIS Award from *Shri Vijaybhai Rupani Hon.* - Chief Minister of Gujarat

BURN PREC



WHY BURNOPREC ?

- To help prevent infection with minor burn, Cuts and wounds
- Providing instant relief with cooling from burning sensation

DOSAGE AND TREATMENT PERIOD

Shake well before use.

Apply Spray immediately under hygienic conditions. Spray from 5 cm distance over the injured area in sufficient quantity to cover the entire burns/injury, Ozone Friendly, NO CFC used

Composition

Aloe Vera Gel, Ascorbic Acid, Papaya Extract, Wool Alcohol, Stearic Acid, Saponin, Chitosan Silver Nanoparticle, Propellant.

Caution

Flammable pressurized Container. Keep away from heat and sunlight. Do not expose temperature exceeding 50° c.



OUR SERVICES

- Analytical testing of Pharmaceuticals & Cosmetics
- Biotechnological Services
- Microbiological Services
- Bio - Compatibility Studies of Medical Device (As per ISO 10993, MHRA & USFDA Guideline)
- Preclinical & Toxicology Services
- Phytochemical Service
- Food Testing Services
- Formulation & Development Services
- Dyes & Pigment Testing Services
- Herbal Formulation Development
- Stability Testing Services
- Clinical Services
- Regulatory Dossier Preparation
- IP Management Services



FDCA License No.: GTL/37/31



(No. Cert/019/Accuprec/2015 /55-2/32202/B)



(Reg. No. 1709/PO/R/13/CPKSA)



NABL Accredited (TG-6124)



ISO 9001:2015 Certified (ASCB - UK, 2017-HK-0018)



ISO/IEC 17025:2015 Certified (ASCB - UK, 201710-01)